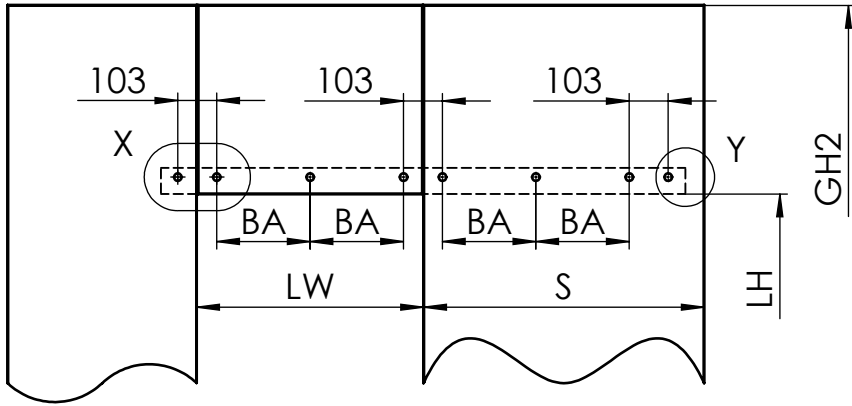
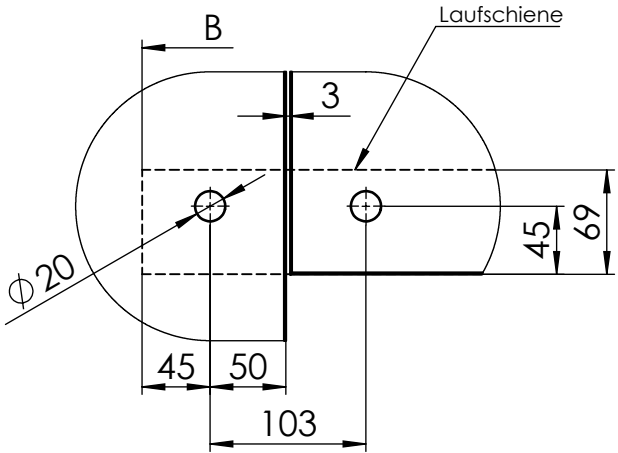


MUTO Comfort XL 1-flügelig Glasbearbeitung

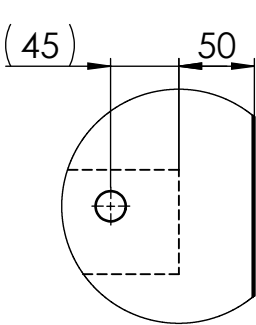


$A = LW + 60$
$B = 2 \times A + 67$
$BA^* = 2 \times (LW - 106) / T$

A	Flügelbreite		
AB	Anzahl der Bohrungen		
B	Laufschienenlänge		
BA	Bohrungsabstand		
GH2	Glashöhe Seitenteil		
LH	lichte Höhe		
LW	lichte Weite		
S	Glasbreite Seitenteil		
T	Anzahl der Teilungen (BA*)		
		T	AB
600 ≤ LW ≤ 800		4	8
800 < LW ≤ 1000		6	10
1000 < LW ≤ 1200		8	12
1200 < LW ≤ 1500		10	14
1500 < LW ≤ 2000		12	16
2000 < LW ≤ 2500		14	18



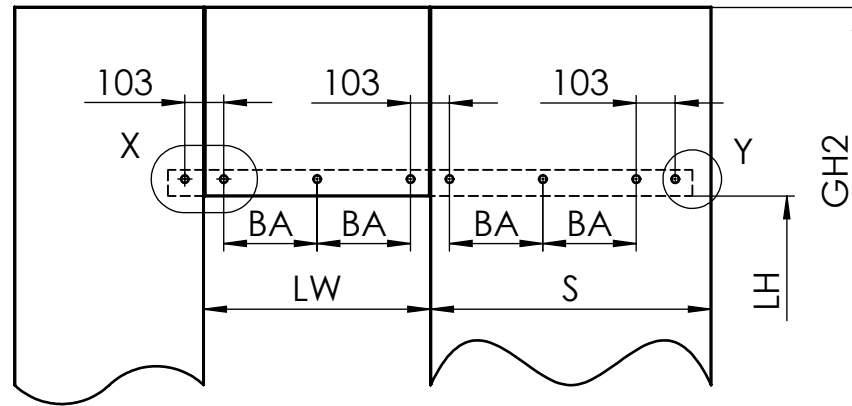
Detail X (1 : 5)



Detail Y (1 : 5)

	XL 150	XL DORMOTION 80	XL DORMOTION 150	XL Self-Closing
min. Flügelbreite:	660mm	810mm	1020mm	850mm
min. lichte Weite	600mm	750mm	960mm	790mm
max. Flügelbreite:	2500mm	2500mm	2500mm	1500mm
max. lichte Weite	2440mm	2440mm	2440mm	2440mm
max. Flügelhöhe:	3000mm	3000mm	3000mm	3000mm
max. Flügelgewicht:	150 kg	150 kg	150 kg	120 kg
Glasdicke:	ESG/VSG 8 - 13,5mm	ESG/VSG 8 - 13,5mm	ESG/VSG 8 - 13,5mm	ESG/VSG 8 - 13,5mm
DORMOTION	nein	Ja	Ja	Ja
getestet nach	DIN EN 1527	DIN EN 1527	DIN EN 1527	DIN EN 1527

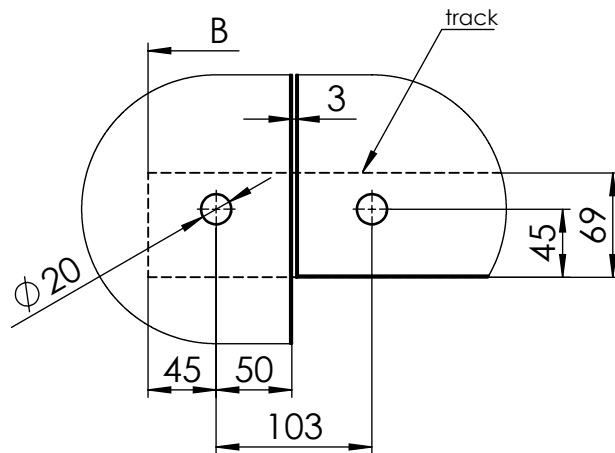
MUTO Comfort XL one door panel glass preparation



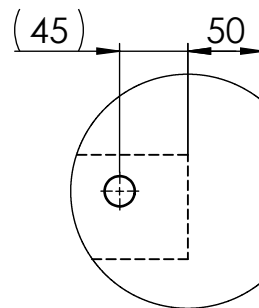
$$A = LW + 60$$

$$B = 2 \times A + 67$$

$$BA^* = 2 \times (LW - 106) / T$$



Detail X (1 : 5)



Detail Y (1 : 5)

A	Glass width	
AB	quantity of drilling	
B	Length of track	
BA	Drilling distance	
GH2	Glass height Sidelight	
LH	Clear opening height	
LW	Clear opening width	
S	Glass width sidelight	
T	quantity of drilling distance (BA*)	
	T	AB
$600 \leq LW \leq 800$	4	8
$800 < LW \leq 1000$	6	10
$1000 < LW \leq 1200$	8	12
$1200 < LW \leq 1500$	10	14
$1500 < LW \leq 2000$	12	16
$2000 < LW \leq 2500$	14	18

	XL 150	XL DORMOTION 80	XL DORMOTION 150	XL Self-Closing
min. door width:	660mm	810mm	1020mm	850mm
min. clear opening width:	600mm	750mm	960mm	790mm
max. door width:	2500mm	2500mm	2500mm	1500mm
max. clear opening width:	2440mm	2440mm	2440mm	2440mm
max. door height:	3000mm	3000mm	3000mm	3000mm
max. door weight:	150 kg	150 kg	150 kg	120 kg
Glass thickness:	ESG/VSG 8 - 13,5mm	ESG/VSG 8 - 13,5mm	ESG/VSG 8 - 13,5mm	ESG/VSG 8 - 13,5mm
DORMOTION	no	yes	yes	yes
performed to	DIN EN 1527	DIN EN 1527	DIN EN 1527	DIN EN 1527